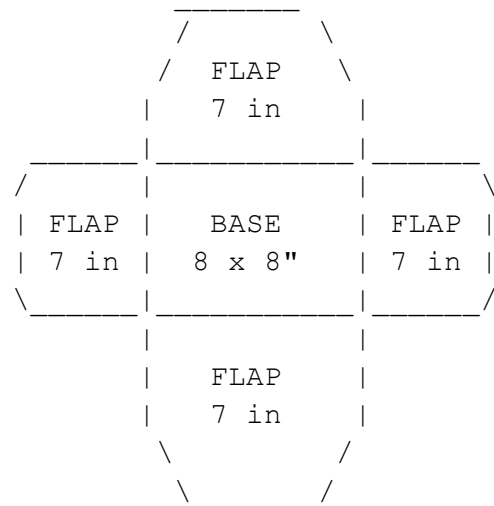


Visual Diagrams (Schematics)

1. The Bread Basket Warmer ("The Cross") *Cut 2 pieces of fabric in this shape.*

Plaintext



Total Width: approx. 22-24 inches

2. The Classic Mitered Corner (Fold Guide) *How to fold the corner before sewing.*

Plaintext

Step A: Unfolded Corner
(Wrong side of fabric up)

